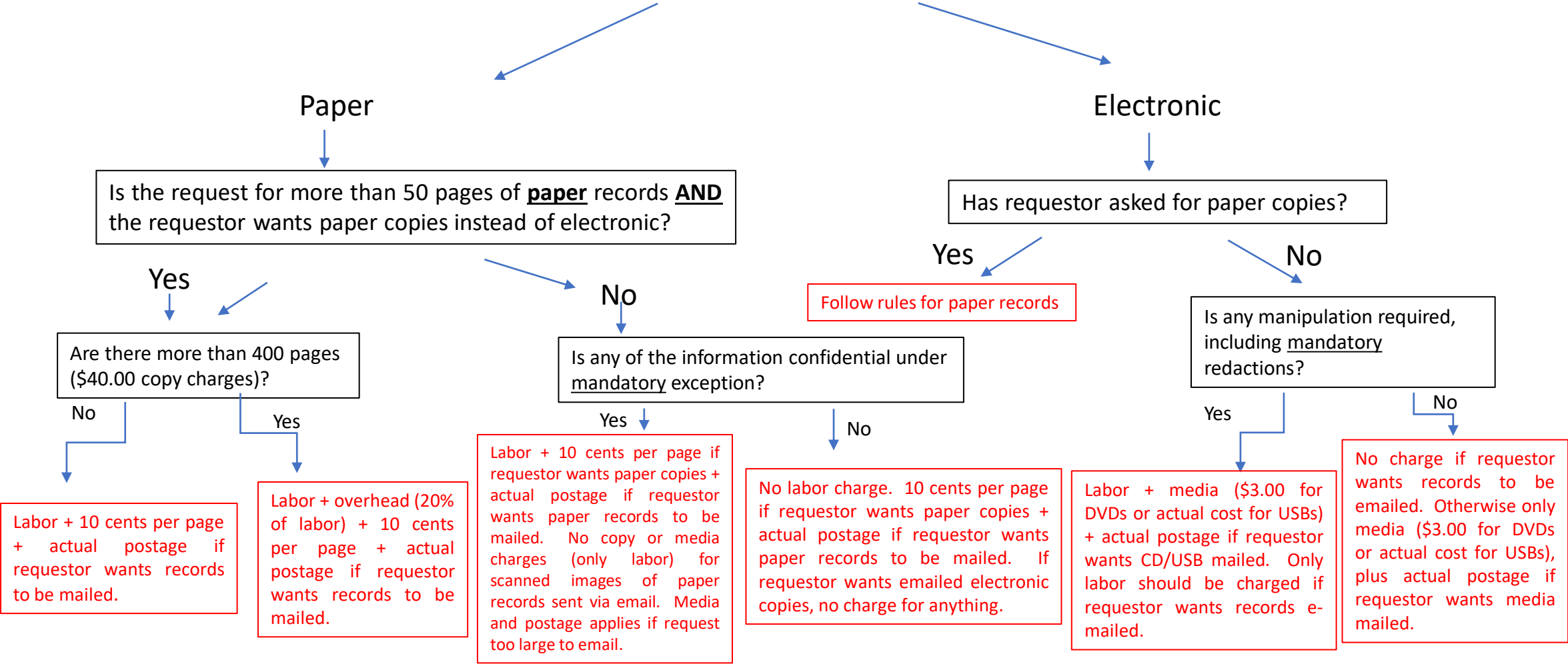


PIA Cost Flow Chart

(This Chart Does Not Apply to Video Requests)

Is the requested information stored by the City in paper or electronic format?



* Labor charges may include actual time to assemble, compile, manipulate, scan, and reproduce records. Time to collect disorganized records, research exceptions, create a cost estimate, write an AG brief, or consult with coworkers or attorney is not included. Attorney's time or fees are never included.