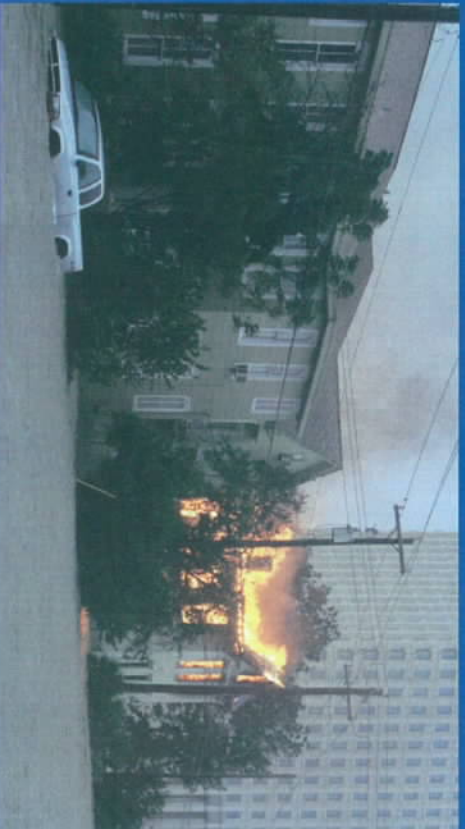
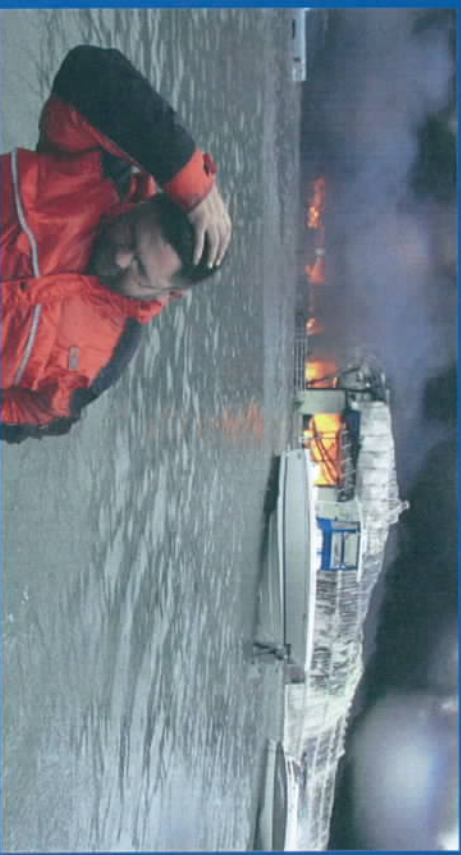
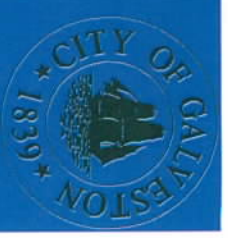


# City Hall/Downtown—Friday



# Friday Afternoon Fires



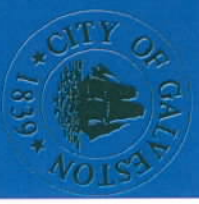


# Galveston Surge

- Behind Seawall
  - 12 to 13 ft. Surge
- West End
  - 10 to 12 ft. Surge
- Entire Island Affected
  - 90% Heavily Damaged
- Hurricane Force Winds
  - 10pm to 10am



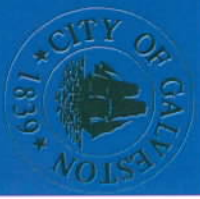
# The Aftermath—No Ingress



# The Aftermath--Damage



# Disaster Victims



# Seeking Shelter



# Shelter

